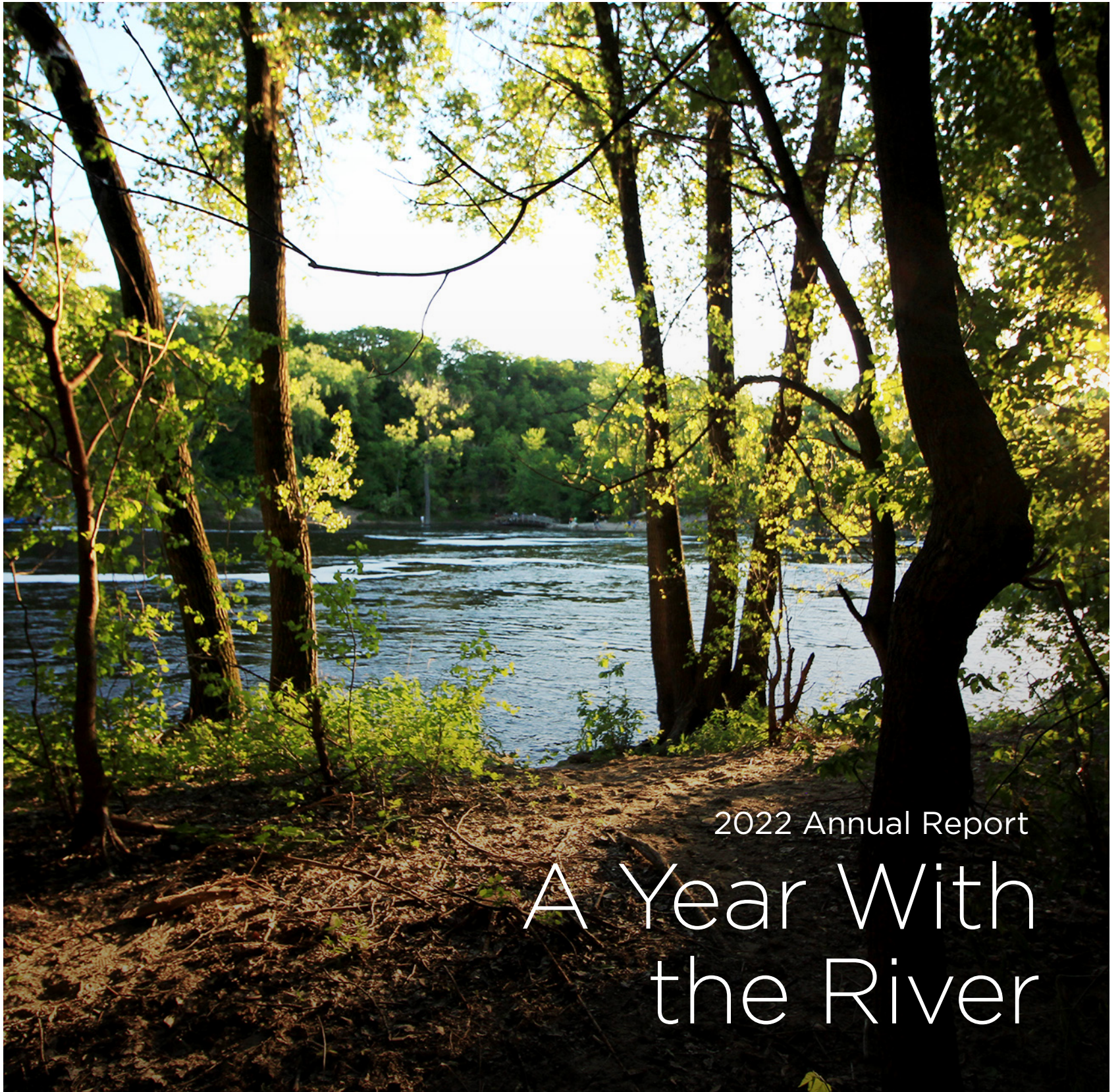


Volume 4, Edition 1 | Spring 2023



# Currently

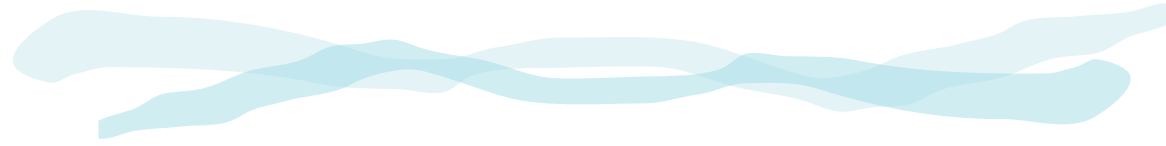
GREAT RIVER PASSAGE CONSERVANCY



2022 Annual Report

# A Year With the River





Dear Great River Passage Conservancy Supporter,

As the river runs again this spring, our work too flows swiftly forward—soon with a new executive director at the helm. As Mary shared in her transition announcement, she is proud of all we’ve accomplished together over the last four years, and excited about the momentum we’ve created for the Conservancy’s next leader. The search for Mary’s successor is underway, and the board is working with local search firm CohenTaylor to hire a leader with the skillset needed to achieve our many ambitious future goals.

While we look ahead to our Mississippi River Learning Center and River Balcony projects moving toward implementation phase and the East Side River District beginning schematic design, our “Year With the River” pauses to take a quick look back at all we accomplished, with your support, in 2022.

The centerpiece of our report is the beautiful imagery representing our three project sites. The river is visual, and through our community workshops, walking tours, and newsletters, we have strived to show it as it was, as it is—and as it can become, through the many partners working collaboratively on the River Learning Center, River Balcony, and East Side River District.

Over the past year we also worked to hear the river, through the power of story. In 2022 we shared several “Voices of the River” videos, including one featuring Cole Redhorse Taylor, who spoke of what the river has meant to the Dakota people. “Many of our Dakota communities here in Minnesota live near water and it’s always a really vital place for us,” says Cole. “These are places of healing, so I would love to see places like these be protected.”

As we move our work forward this spring, thank you for seeing and hearing the river with us.

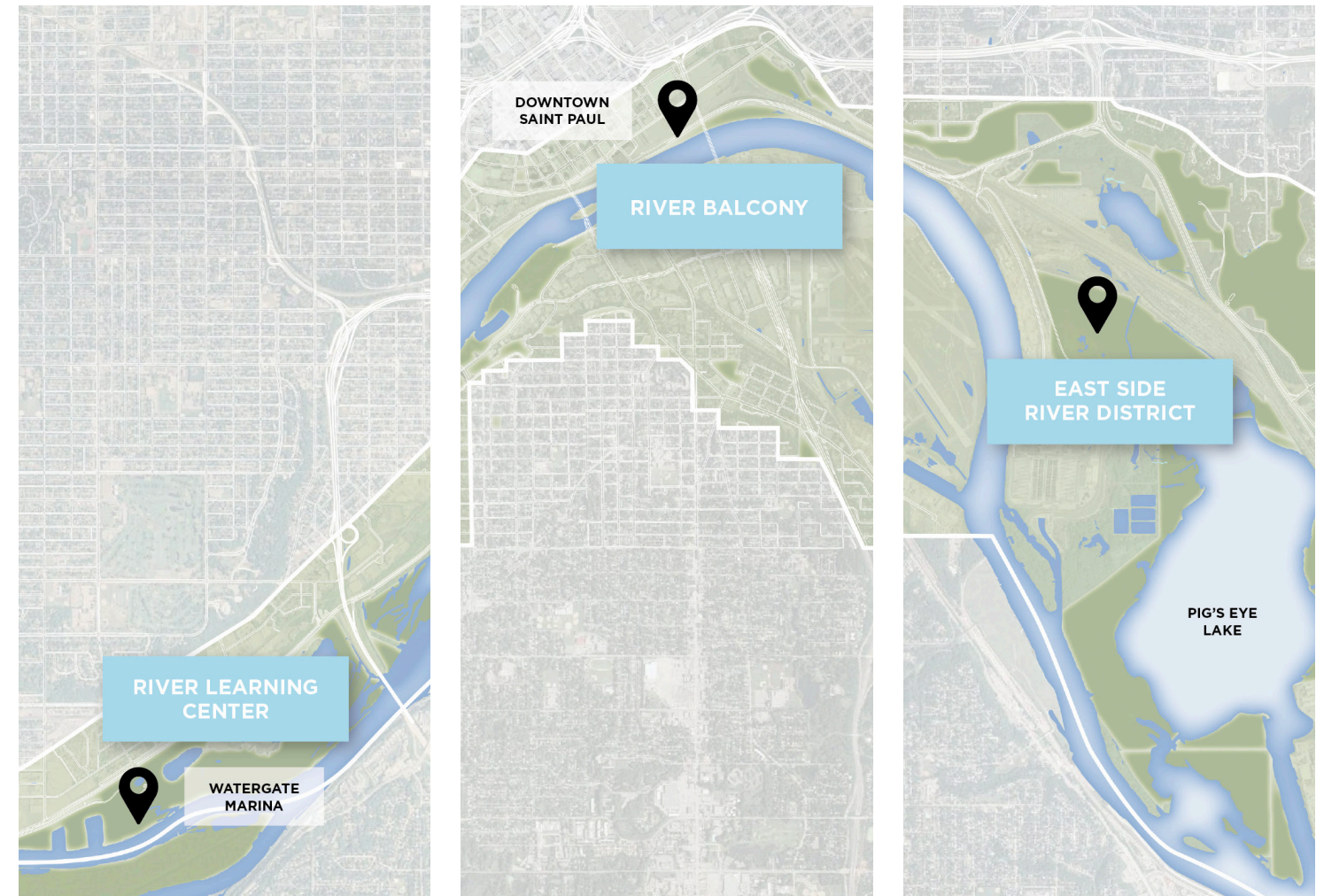
With the river,



**Peter Myers**  
Board Chair  
Great River Passage Conservancy  
Owner, Myers Communication Group



**Mary E. deLaittre**  
Founding Executive Director  
Great River Passage Conservancy



## 2022 PROJECT MILESTONES

### Mississippi River Learning Center

After months of design iteration and community feedback, we finalized a schematic design concept for the Mississippi River Learning Center in 2022. We are now poised to take on implementation in the coming months, and we have advanced a \$23,500,000 state capital bonding request to move that work forward.

### River Balcony

Like the Learning Center, the River Balcony finalized its schematic design in 2022. In our very first River Balcony survey, more than 80% of respondents said they felt a stronger connection to the river after seeing the project designs.

We also made promising progress in establishing a governance structure for this complex project, as we aim to balance and integrate the many roles and responsibilities required to build the River Balcony in a truly collaborative way.

### East Side River District

Meanwhile, we are nearing the launch of schematic design for the 1,000-acre East Side River District. Especially at the East Side River District, the Conservancy is determined to reveal, heal, protect, and connect the landscape. In May 2022 the Senate passed a bill establishing a task force to accelerate the clean-up at Pig’s Eye landfill. The Conservancy was instrumental in advancing this bill through testimony before the House Committee.





Mississippi River Learning Center



River Balcony

## 2022 ORGANIZATIONAL MILESTONES

We could not have made such progress on our three projects without a strong foundation of organizational priorities.

### Dakota Engagement

The Conservancy's Dakota Engagement Initiative ensures that Indigenous voice drives our project design, prioritizing Native-focused place-making and place-keeping across our three key projects. That co-creation continued in 2022 as we worked hand in hand with Dakota tribes, other local Native communities, and Full Circle Indigenous Planning + Design to inform our decision-making.

### Equity Planning

As shared last year, we were one of six organizations to take part in the High Line Network's Equitable Impacts Framework (EIF). In 2022 we reached the final phase of equity planning, then contracted with a local equity consultant, Culture Brokers, to finalize the equity strategy and implementation plan.

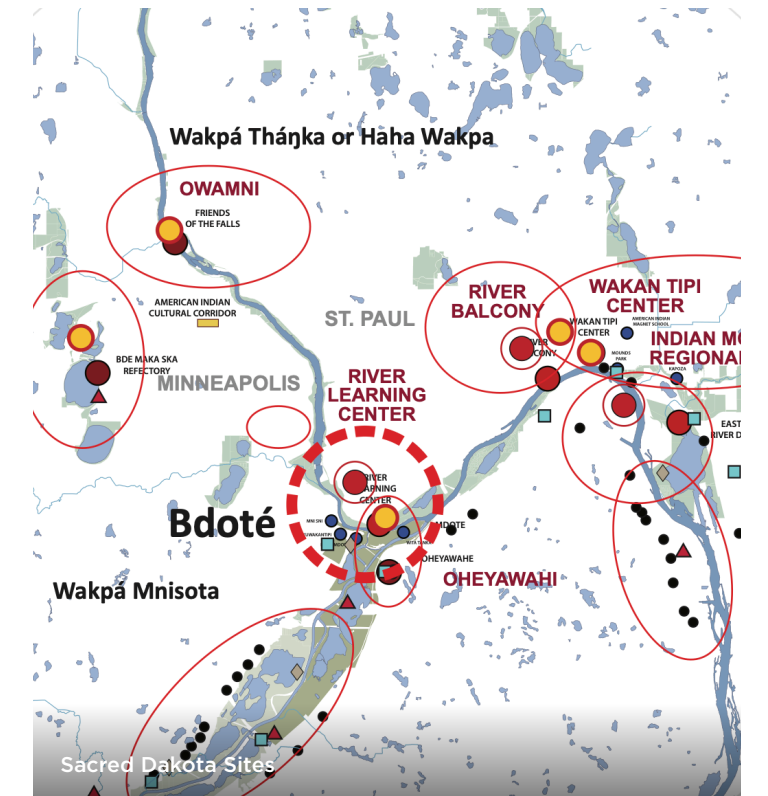
### Voices of the River

Aligned with our equity focus, we find great meaning and impact in the power of story. We published several "Voices of the River" videos over the last year, shining new light on the river through these stories.

You can see and hear them on:  
[www.greatriverpassage.org](http://www.greatriverpassage.org).



East Side River District





## 2022 FINANCIAL STATEMENTS\*\*

STATEMENT OF ACTIVITY	Without Donor Restriction*	With Donor Restriction*	Total
TOTAL INCOME	\$906,494	\$(422,963)	\$483,533
TOTAL EXPENSES	414,408	-	414,408
BEGINNING NET ASSETS	152,731	579,723	732,455
CHANGE IN NET ASSETS	43,087	(422,963)	(379,876)
ENDING NET ASSETS	<b>\$195,818</b>	<b>\$156,761</b>	<b>\$352,579</b>

### STATEMENT OF ASSETS & LIABILITIES

TOTAL CURRENT ASSETS	\$833,058
TOTAL CURRENT LIABILITIES	480,480
NET ASSETS	
Without Donor Restriction*	195,818
With Donor Restriction*	156,761
NET INCOME	352,579
TOTAL EQUITY	480,480
<b>TOTAL LIABILITIES &amp; EQUITY</b>	<b>\$833,058</b>

\*Total income includes the release of restricted funds to operations once the program or time restriction has been satisfied.  
 \*\*Preliminary, unaudited.



## 2022 DONOR LIST

We are grateful to the individuals and organizations listed below who are supporting the transformation of Saint Paul's relationship to our 17 miles of Mississippi River.

### CONTRIBUTIONS \$50,000+

REI Cooperative Action Fund  
 Capitol Region Watershed District  
 Mississippi Park Connection\*

The Lexington Fund  
 Mike McDonald  
 Daniel and Nancy McGuiness  
 Joseph and Jane Micallef  
 Richard Miller & Marcia Morris  
 Joe and Christina Nayquonabe

### CONTRIBUTIONS \$5,000 - \$49,999

Eva C. Baillon, Paul V. Baillon Fund  
 Flint Hills Resources  
 Sandy Fuller  
 Hardenbergh Foundation  
 The John and Ruth Huss Fund  
 Katherine B Andersen Foundation  
 Greg McNeely  
 Ms. Elizabeth B. Myers  
 Peter and Karla Myers  
 Nicholson Brothers Fund  
 Saint Paul & Minnesota Foundation  
 Bill and Susan Sands

Amanda and Ravi Norman  
 Thomas and Sally Patterson  
 Kristin Rasmussen  
 Jake Reint and Stephanie Moncada  
 Erin Riley  
 Thomas Riley  
 Jean Rivard  
 Jim Rustad and Kay Thomas  
 Linda Schloff  
 Penelope Scialla  
 Gordon and Jeanne Shepard Family Fund  
 Kathy Sidles  
 Russell Stark  
 William Stoeri  
 Lucy Thompson  
 Robert & Agnes Van Tassel  
 Dan and Brenda Williams  
 Charlie Zelle  
 Zicarelli Foundation




### CONTRIBUTIONS UP TO \$5,000

Joseph Baierl and Denise DuChateau  
 The Bell & Schafer Family Fund  
 Nancy Blankfard  
 Cameron Boyd  
 Brooks Resources Corporation  
 Dana and Douglas Bruce  
 Monica Bryand  
 Shelley Buck  
 Daniel R. Clarkin  
 Jay and Page Cowles  
 Mary and David Dayton  
 Michael Dickson  
 Thomas Fisher and Claudia Wielgorecki  
 Sara Fleetham  
 Jodi Glaser  
 John Grant  
 Christina Hausman Rhode  
 Ann and David Heider  
 Edward Heimel  
 Mary Hilfiker  
 Jody Hurlbut  
 Bob Jensen  
 Mark Krause  
 Jan Leadholm

\*For Mississippi River Learning Center



370 Wabasha St N, Suite 540  
Saint Paul, MN 55102  
612-398-5989 | [greatriverpassage.org](http://greatriverpassage.org)

-  @greatriverpassage
-  @grpassage
-  @greatriverpassage

*Great River Passage Conservancy is a 501(c)(3) nonprofit. Donations are tax-deductible to the extent of the law.*

## ABOUT THE GREAT RIVER PASSAGE CONSERVANCY

The **Great River Passage Conservancy** was founded in late 2018 to rally philanthropic support for the Great River Passage Initiative’s river-focused projects designed to build economic vitality along Saint Paul’s stretch of the Mississippi River. All on Dakota homeland, these three projects—the River Learning Center and National Park Service Headquarters, River Balcony, and East Side River District —respond to the enduring qualities of the Mississippi River that link it to Saint Paul and the wider region’s historical, cultural, environmental, and economic well-being.

With Saint Paul’s 17 miles of river, 26 miles of river edge, and 3,500 acres of publicly owned land, we have a unique opportunity to become the River Capital and unite our region’s two greatest assets: its people and one of the three great rivers of the world, the Mississippi.

By advancing major projects along the Mississippi River that allow all people to experience the river in new and equitable ways, the Great River Passage Conservancy fosters environmental stewardship, community health, and economic development.

## 2022 BOARD OF DIRECTORS

**Peter B. Myers (Chair)**  
Myers Communications Group

**Tanya Bell**  
Grand Real Estate Advisors

**Cameron Boyd**  
Metropolitan Airports Commission

**Monica Bryand**  
Voices for Racial Justice

**Shelley Buck**  
Prairie Island Indian Community

**Jay Haapala**  
AARP

**Eric J. Jolly, Ph.D.**  
Saint Paul & Minnesota Foundation

**John I. Marshall**  
Xcel Energy

**Joe Nayquonabe Jr.**  
Mille Lacs Corporate Ventures

**Jake Reint**  
Flint Hills Resources

**Andy Rodriguez (Ex Officio)**  
City of Saint Paul Parks and Recreation

**Russ Stark (Ex Officio)**  
City of Saint Paul

